

A primer in Forensics Psychiatry - Navigating The Forensic Mental Health System

Dr. Mathieu Dufour, MD, FRCPC
Forensic Psychiatrist
Associate Chief (Ottawa), The Royal
President, Ontario Psychiatric Association
Assistant Professor, University of Ottawa

CIAJ
43rd Annual Conference
19 October 2018



Mental Health - Care & Research
Santé mentale - Soins et recherche

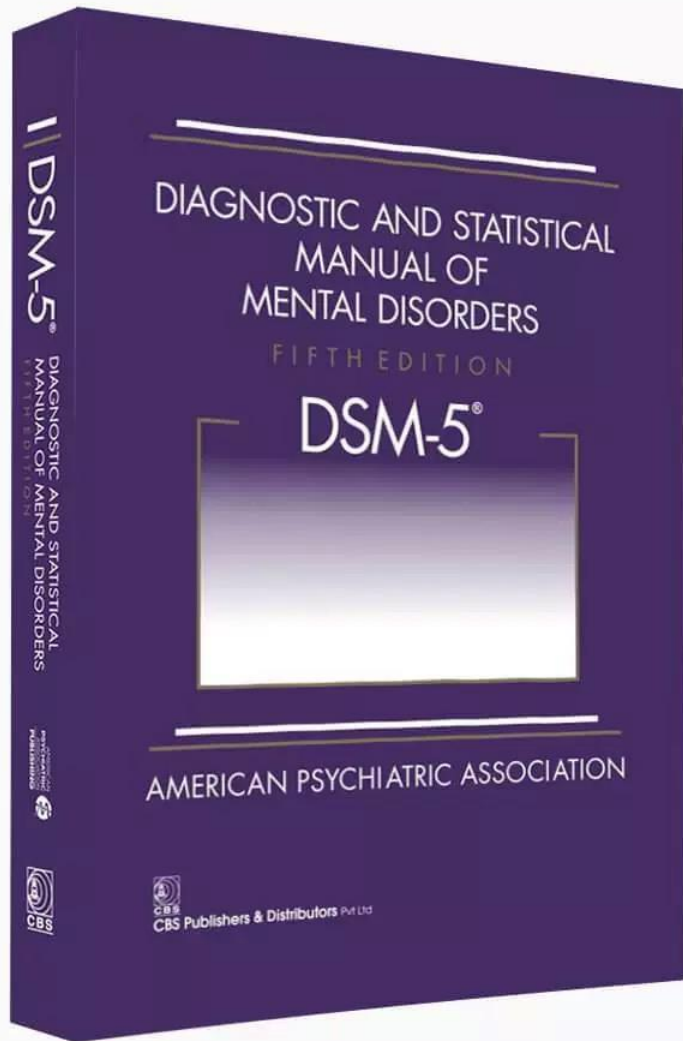
Centre de Santé Mentale
Royal Ottawa
Mental Health Centre

ROYAL OTTAWA
HOSPITAL
MENTAL HEALTH CENTRE

ST. MARGARET'S
HOSPITAL
MENTAL HEALTH CENTRE



WHAT ARE THE MAIN MENTAL ILLNESSES?

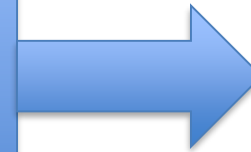


Mental illnesses

- Psychotic disorders
 - Schizophrenia
- Mood disorders
 - Bipolar disorder
 - Major depressive disorder
- Anxiety disorders
- Personality disorders
- Substance use disorders
- Neurocognitive disorders

Mental illnesses

- Psychotic disorders
 - Schizophrenia
- Mood disorders
 - Bipolar disorder
 - Major depressive disorder



Serious
Mental
illnesses
(SMI)

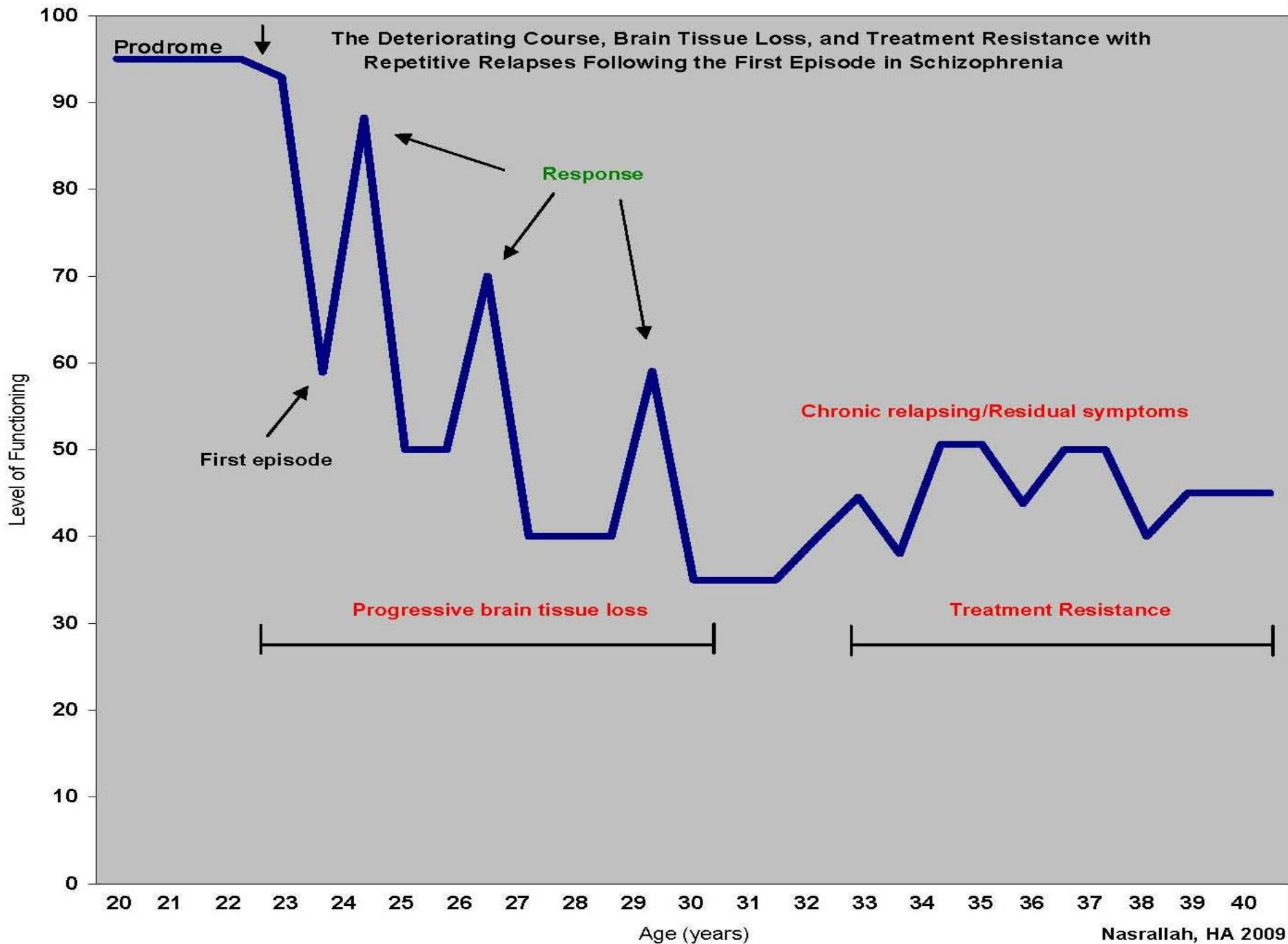
Anxiety disorders

- Personality disorders
- Substance use disorders
- Neurocognitive disorders

Psychotic disorders

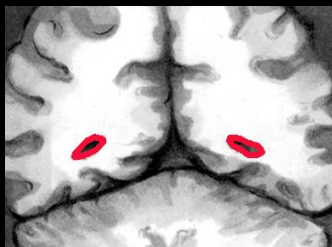
- Psychosis
 - Loosing touch with reality
 - 3 psychotic symptoms
 - Hallucinations
 - Delusions (Fixed false belief)
 - Disorganization (speech or behavior)
- Most common psychotic disorder
 - Schizophrenia (1% of the population)
- Other causes
 - Drug induced, medical illnesses



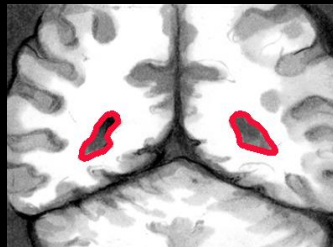


Cerebral lesions

1st episode



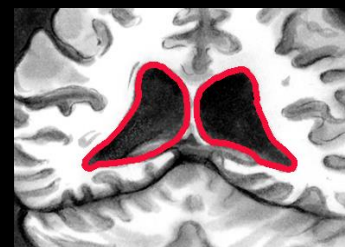
2nd episode



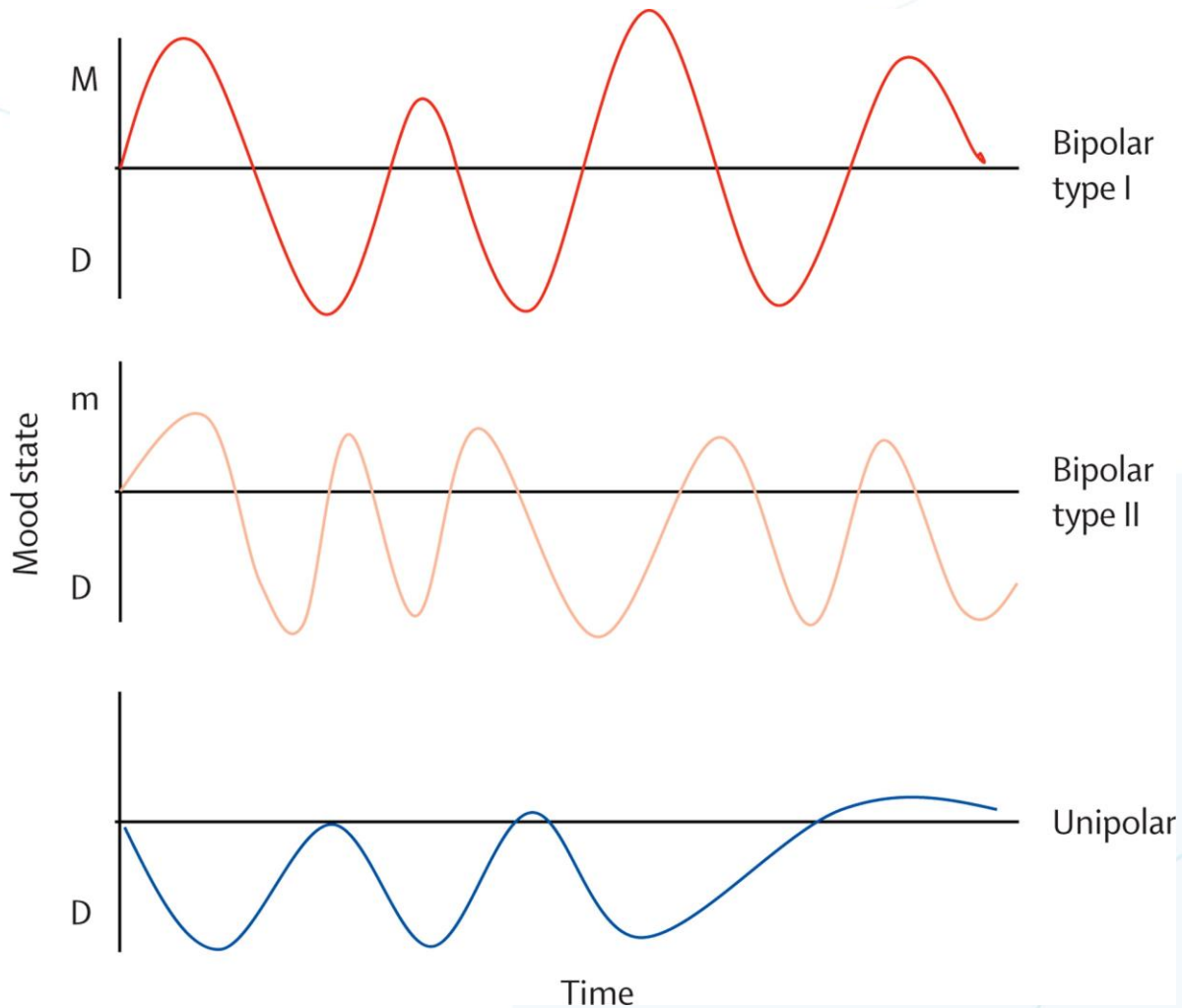
3rd episode



4th episode



Mood disorders



Other diagnosis

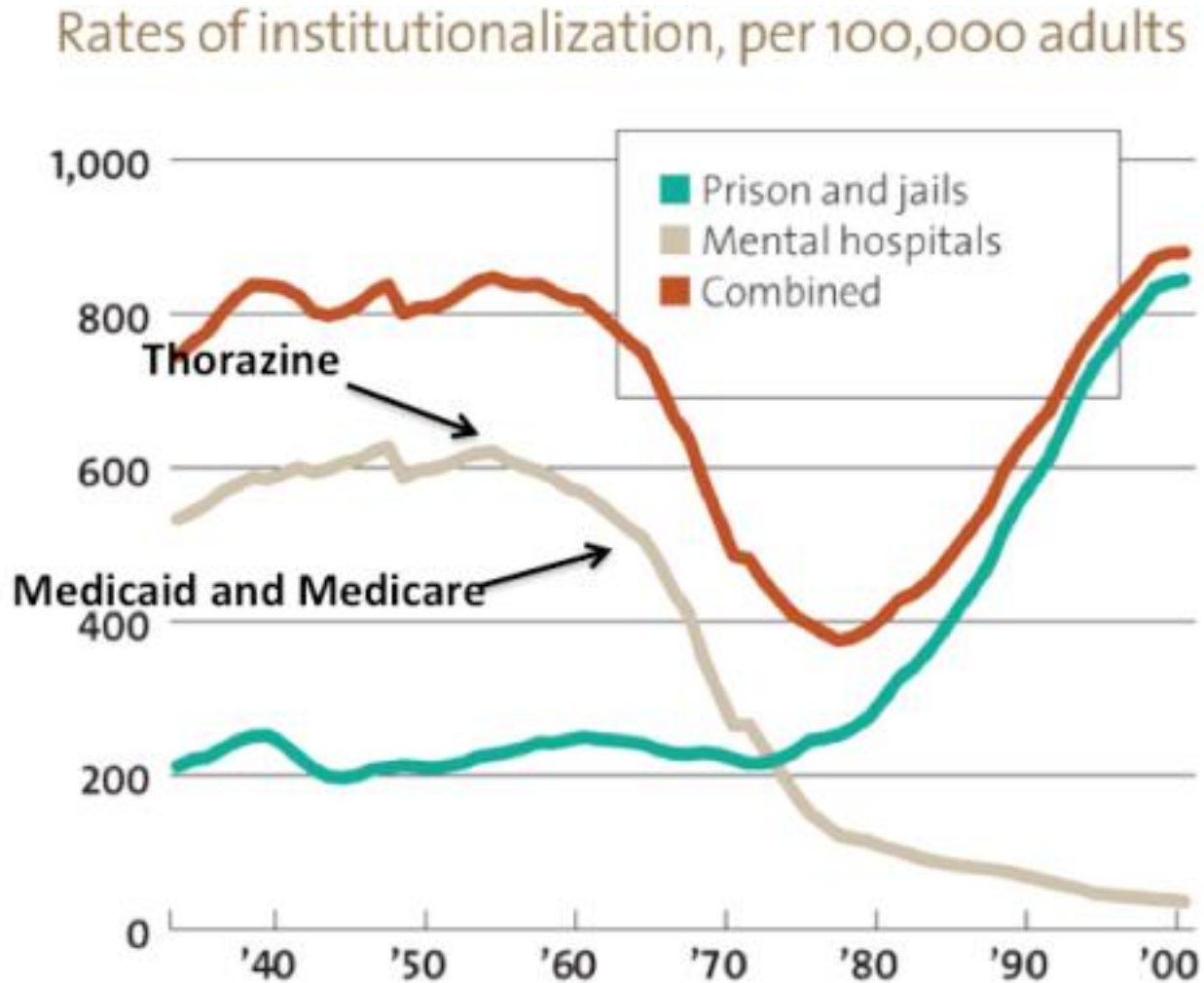
- Chapter 4. Neurodevelopmental Disorders
- Chapter 5. Schizophrenia Spectrum and Other Psychotic Disorders
- Chapter 6. Bipolar and Related Disorders
- Chapter 7. Depressive Disorders
- Chapter 8. Anxiety Disorders
- Chapter 9. Obsessive-Compulsive and Related Disorders
- Chapter 10. Trauma- and Stressor-Related Disorders
- Chapter 11. Dissociative Disorders
- Chapter 12. Somatic Symptom and Related Disorders
- Chapter 13. Feeding and Eating Disorders
- Chapter 14. Elimination Disorders
- Chapter 15. Sleep-Wake Disorders
- Chapter 16. Sexual Dysfunctions
- Chapter 17. Gender Dysphoria
- Chapter 18. Disruptive, Impulse-Control, and Conduct Disorders
- Chapter 19. Substance-Related and Addictive Disorders
- Chapter 20. Neurocognitive Disorders
- Chapter 21. Personality Disorders
- Chapter 22. Paraphilic Disorders
- Chapter 23. Other Mental Disorders
- Chapter 24. Medication-Induced Movement Disorders and Other Adverse Effects of Medication

WHERE DID WE TREAT THE MENTAL ILLNESSES?



Deinstitutionalization

Transinstitutionalization



Involuntary commitment: More stringent criteria



Transinstitutionalization: Causes

❖ Deinstitutionalization

- Decreased number of psychiatric beds
- Not proportionate investment in community treatment settings
 - Lack of community resources for the people with serious mental illness

❖ More stringent certification criteria

- Pendulum

❖ Government policies

- Tough on crime
- More incarceration for minor offences and drug offences

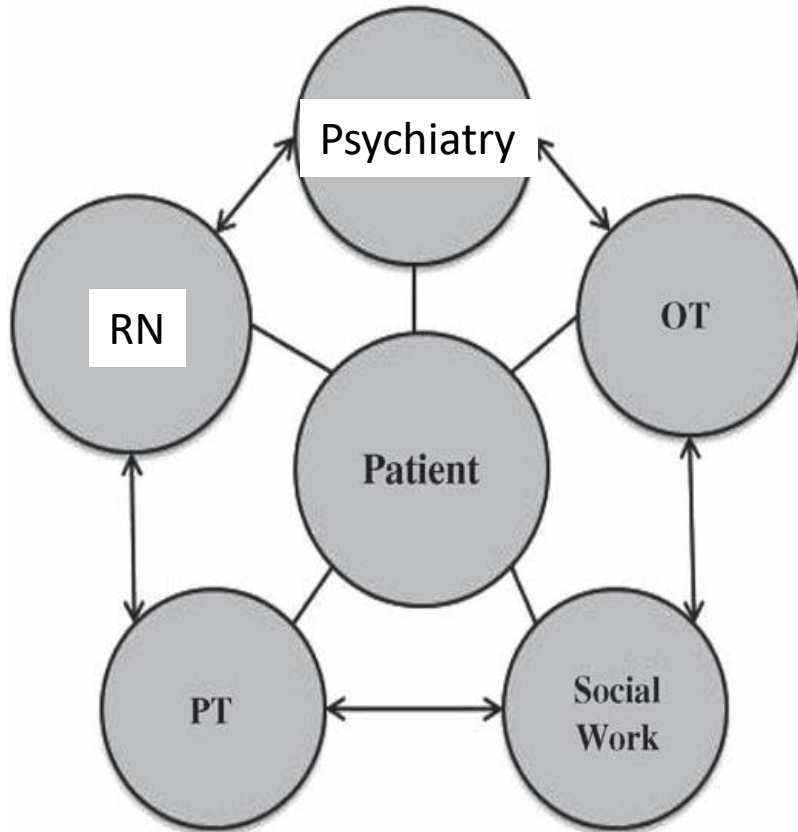
HOW DO WE TREAT PATIENTS WITH MENTAL ILLNESSES IN CORRECTIONS?

Mental illnesses in correctional settings

- ❖ Substance use disorders: 80%
- ❖ Personality disorders: 60%
- ❖ Over representation Serious mental illnesses (SMI)
 - Male 15-20% (women: 30%)
 - 4% psychosis (compared to 1% of general population)
 - 2% bipolar (compared to 1% in general population)
 - 10% MDD

Interdisciplinary Care

Multidisciplinary Model



Interdisciplinary Model

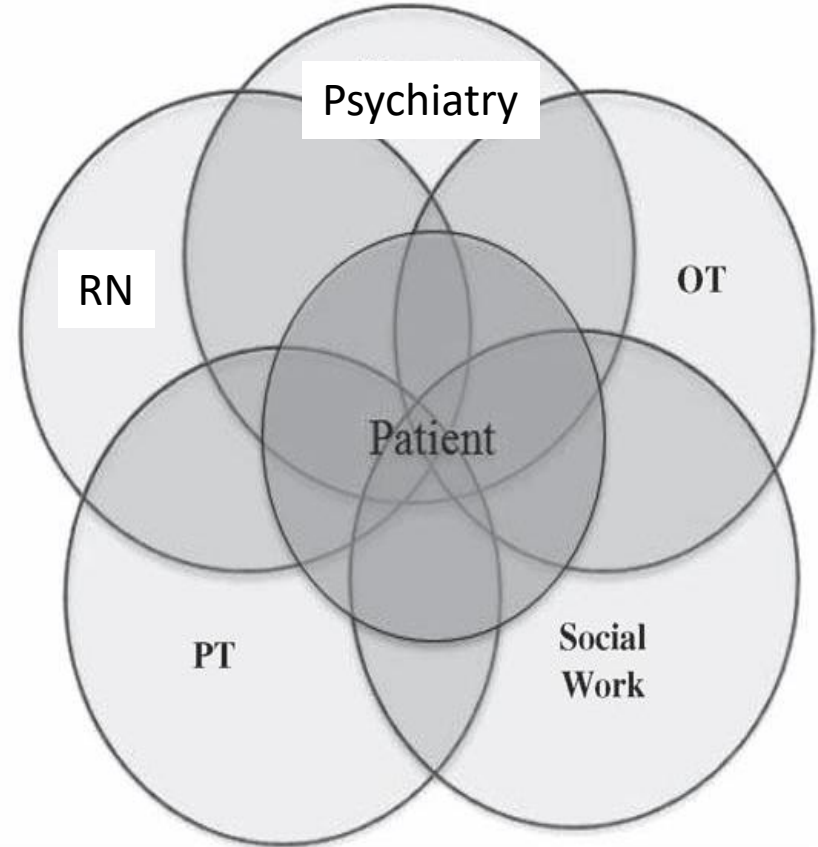


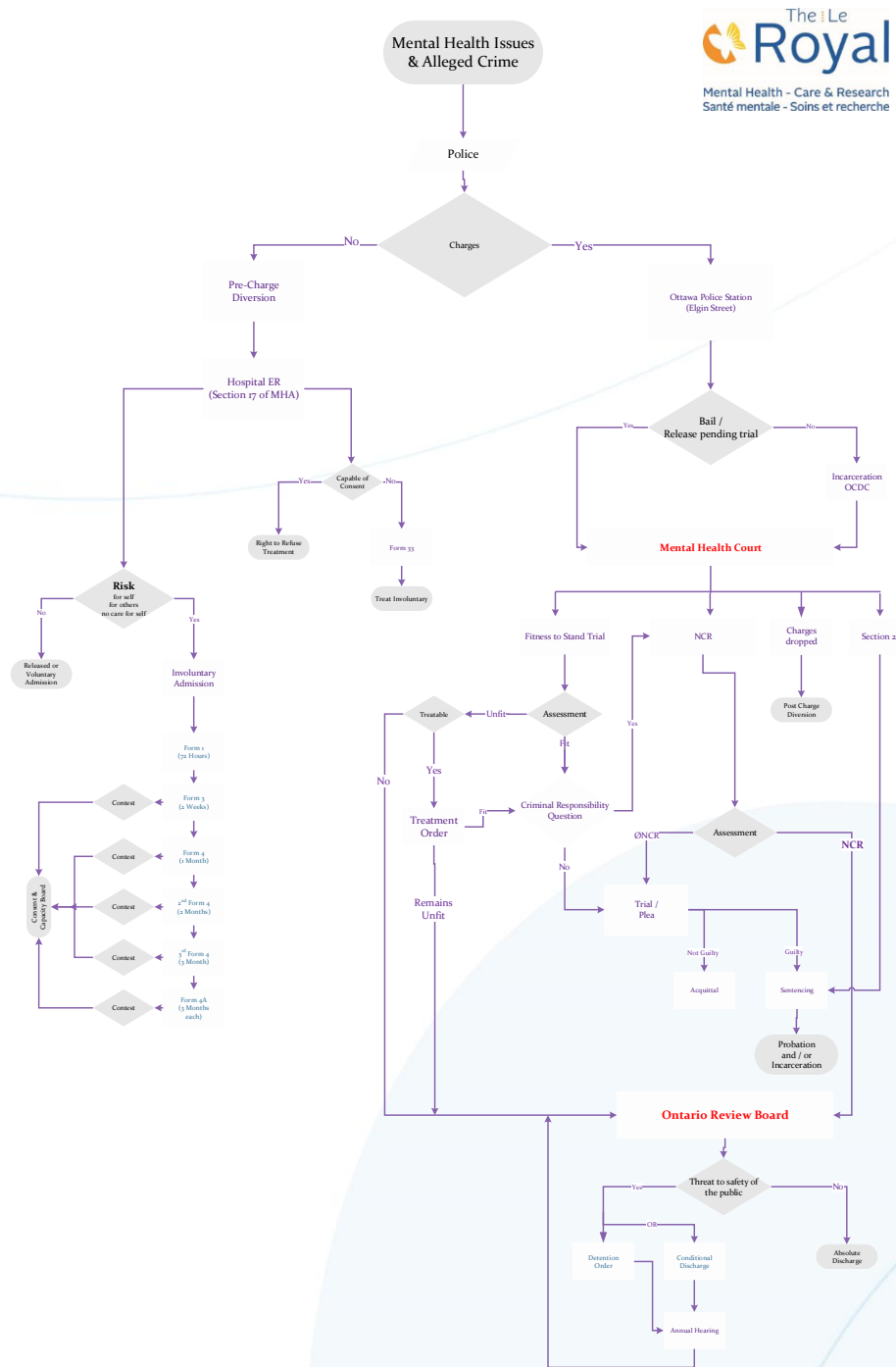
FIG. 1. Multidisciplinary and Interdisciplinary models of care.

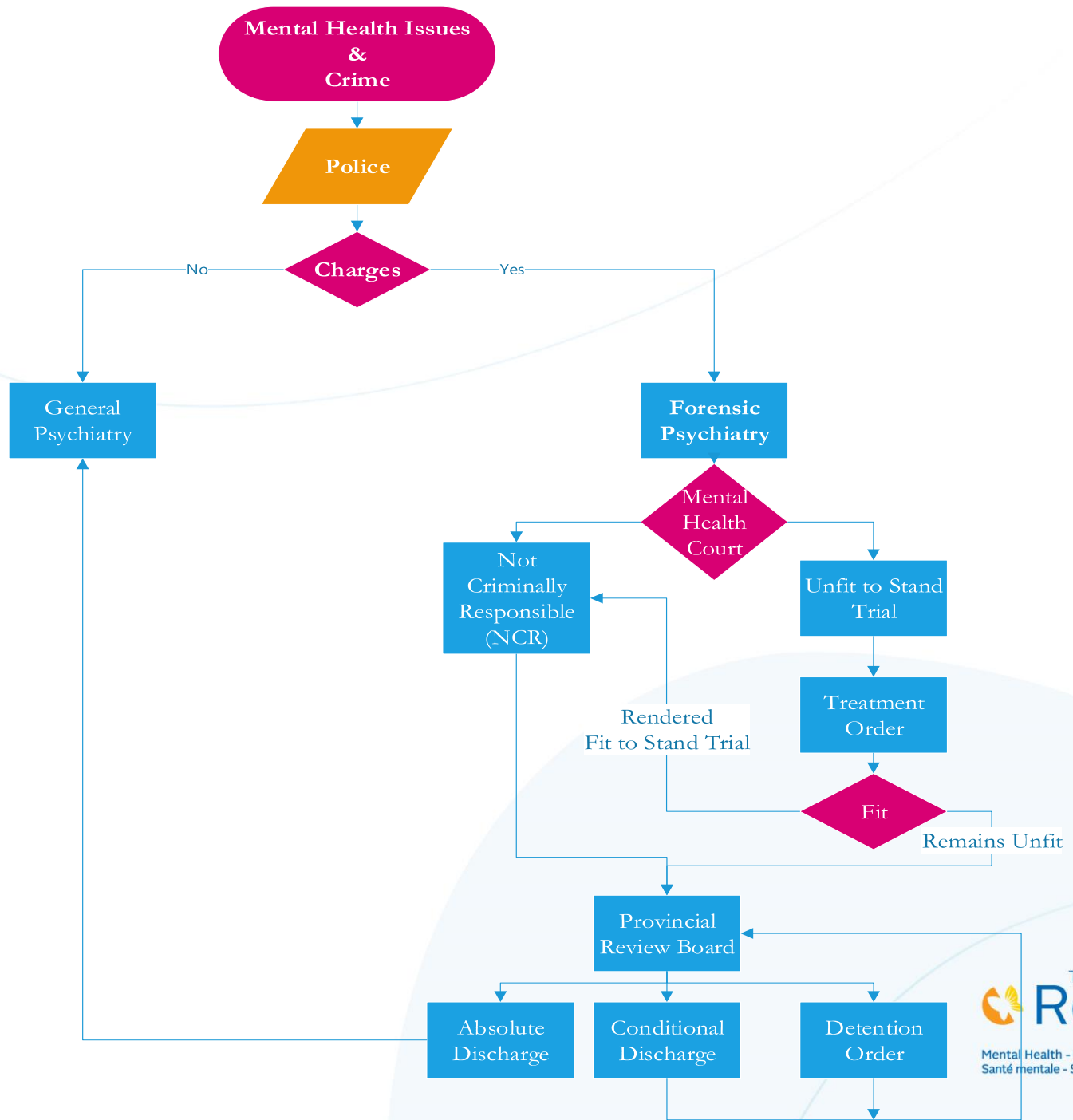
Challenges in Correctional Psychiatry

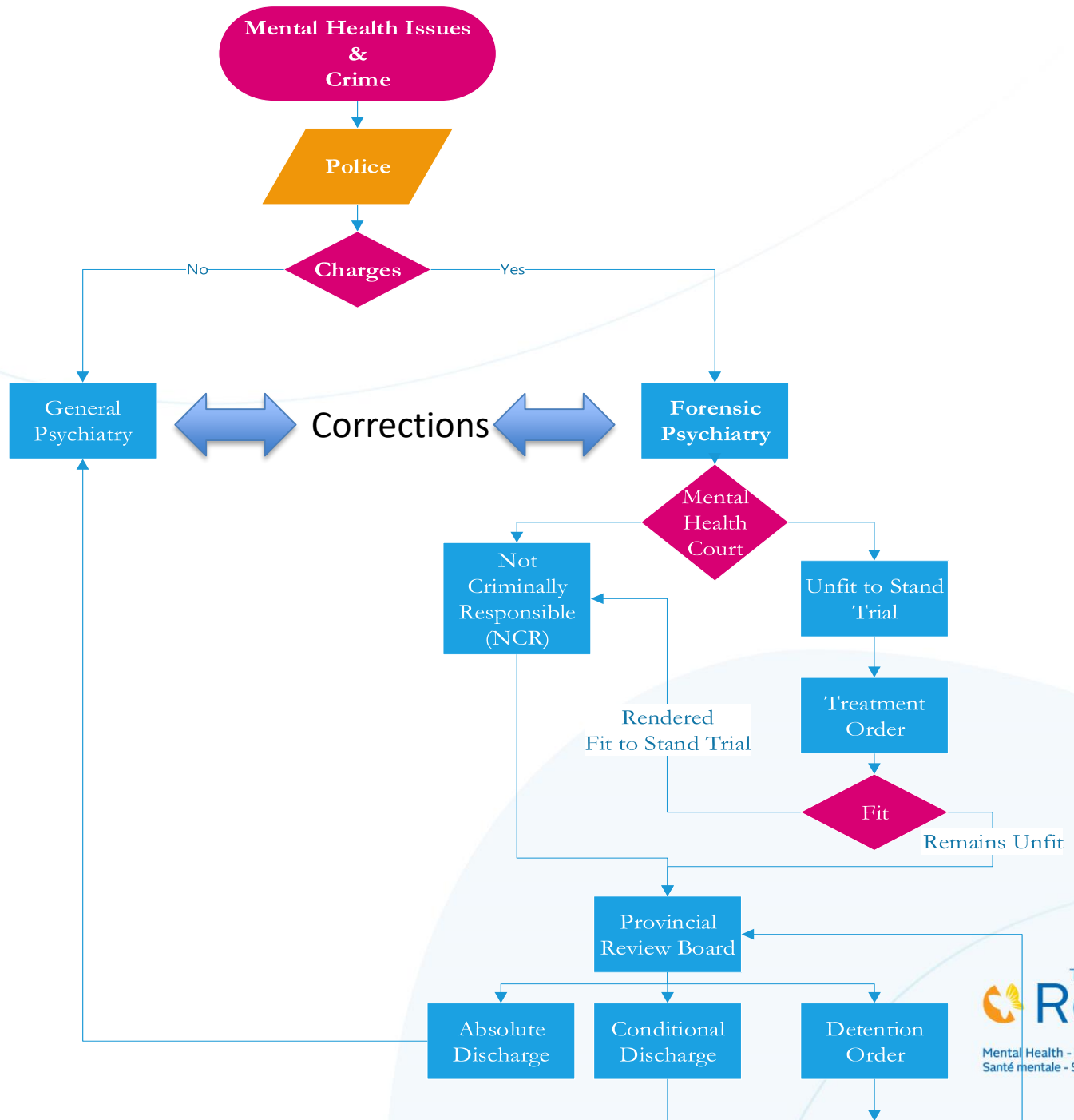
- ❖ Less resources for interdisciplinary care
 - Compared to hospitals
- ❖ Security may trump health needs
- ❖ Correctional settings considered as outpatient settings under MHA
 - Barriers to Access to specialized mental health care



HOW DO PATIENTS ACCESS THE FORENSIC SYSTEM?

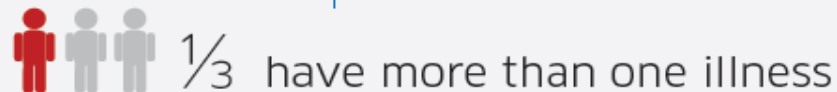






What is their mental illness?

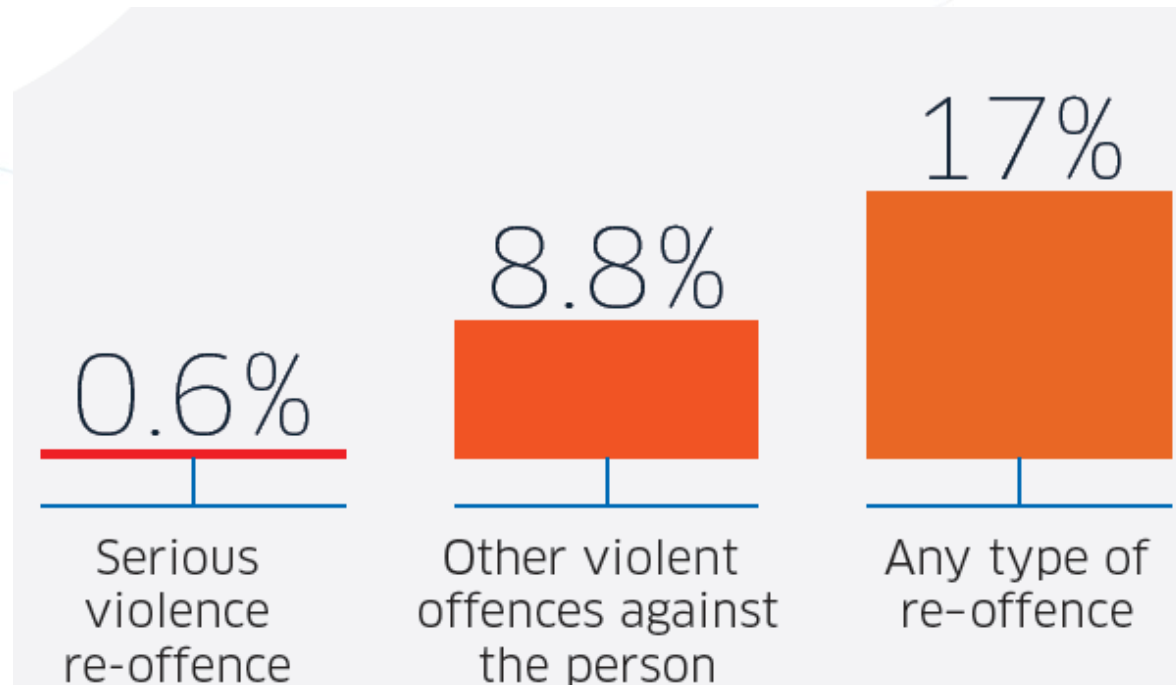
Out of **100 individuals** found NCR have a:



Services Delivery Models in Forensic Mental Health

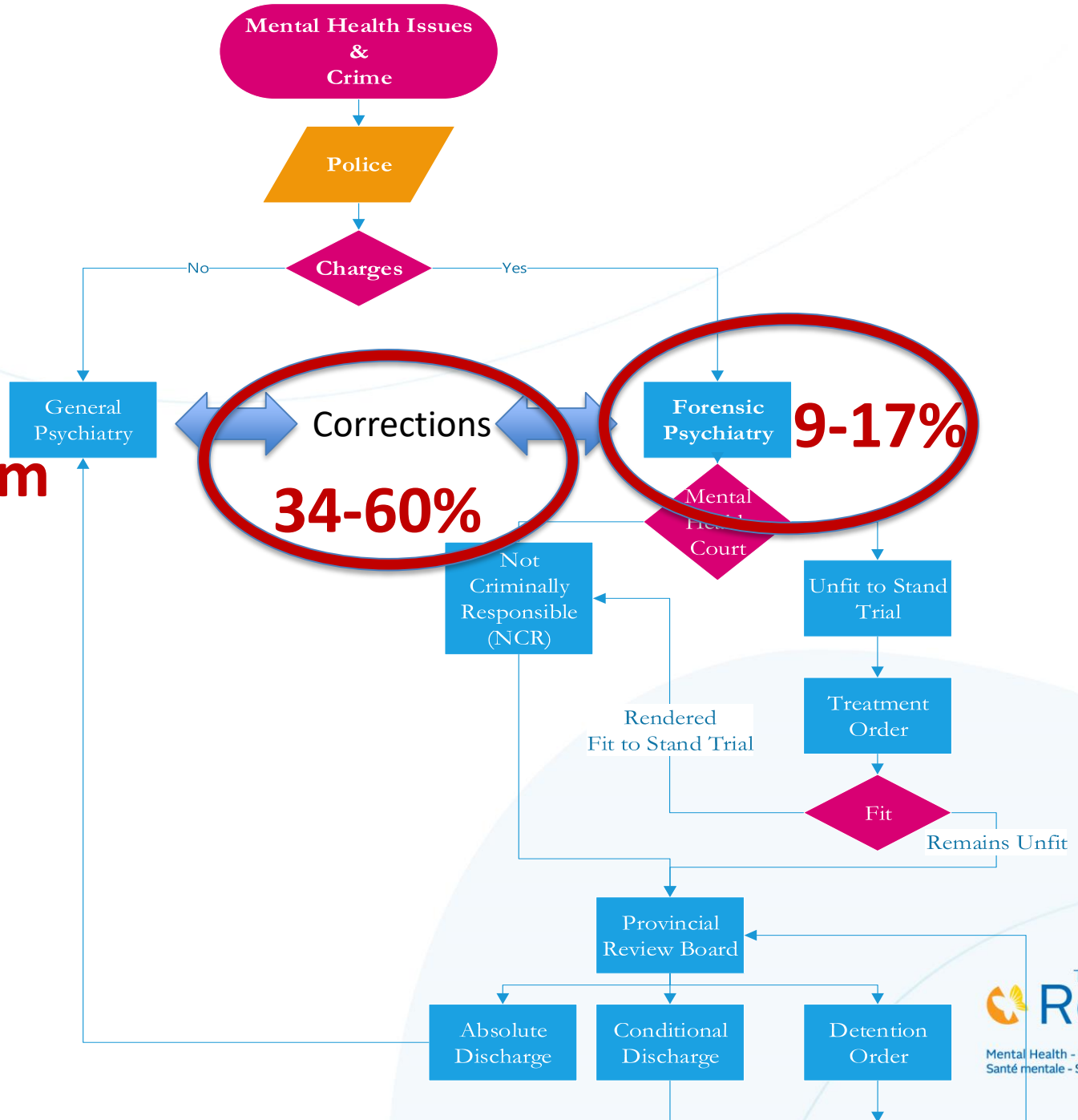
- Interdisciplinary
 - Intensive case management
 - Forensic ACT team
- Provincial Review Board Disposition
 - Lower threshold for readmission
 - Approval of housing
 - Other conditions

Recidivism of NCR (after 3 years of Follow-up)



Crocker, A.G., Nicholls T. L., Seto, M. C., Charette, Y., Côté, G. & Caulet, M. (2015). The National Trajectory Project of Individuals found Not Criminally Responsible on Account of Mental Disorder in Canada. Canadian Journal of Psychiatry

Recidivism



SAFETY THROUGH RECOVERY



QUESTIONS